

# Figurer i kapitel 11



<p>Fig. 11.2</p>	<p>Fig. 11.11</p>
<p>Fig. 11.3</p>	<p>Fig. 11.12</p>
<p>Fig. 11.5</p>	<p>Fig. 11.13</p>
<p>Fig. 11.6</p>	<p>Fig. 11.17</p>
<p>Fig. 11.7</p>	<p>Fig. 11.20</p>
<p>Fig. 11.8</p>	<p>Fig. 11.26</p>



11.2 Egetræet som økosystem.



Fig. 11.2



Fødesøgningshøjde (m)

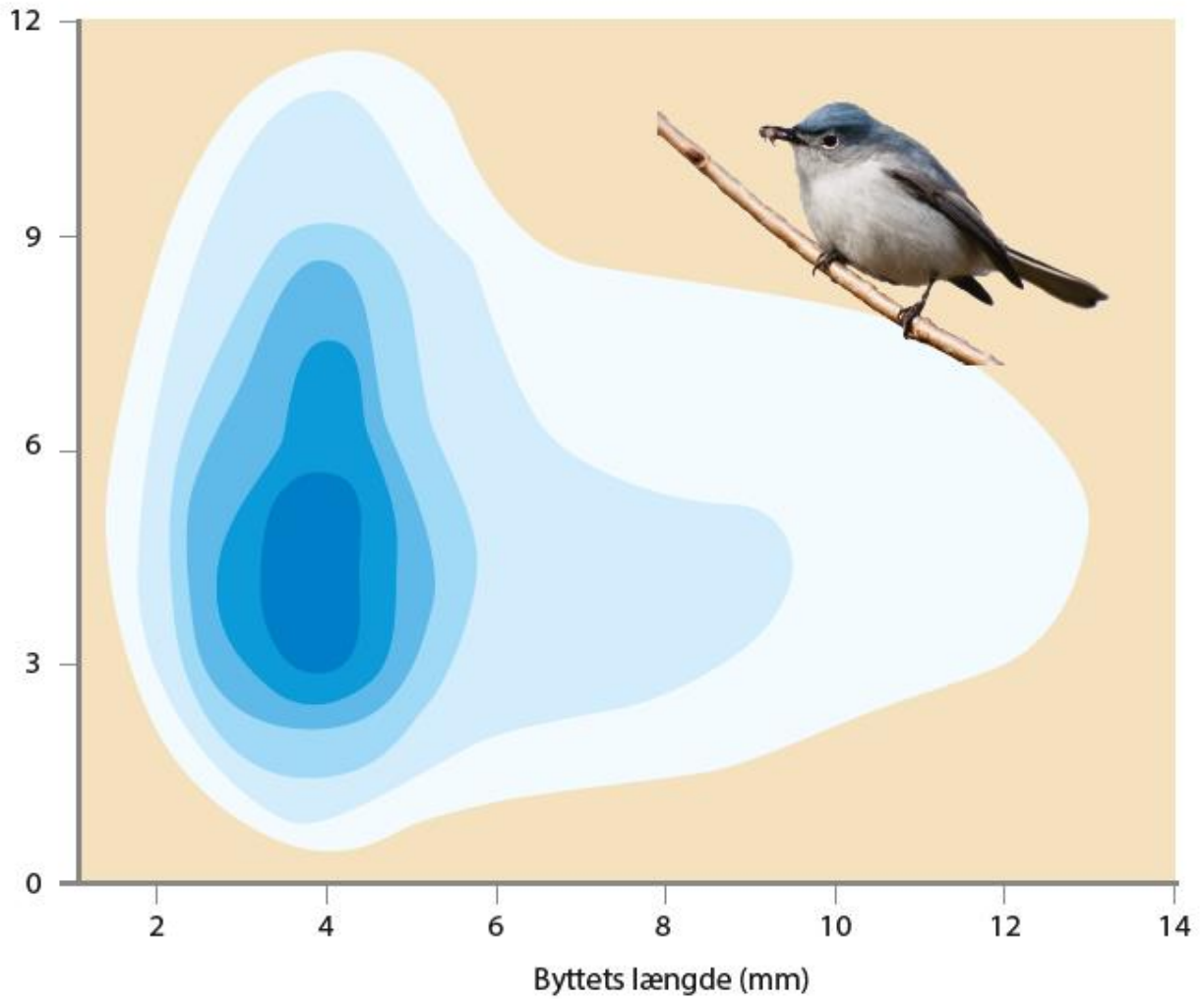


Fig. 11.3

LIV-Grundbog til biologi • © L&R Uddannelse 2018 • Illustration: Jørgen Strunge (Efter Smith, 2000)  
ISBN 978-87-7066-707-4

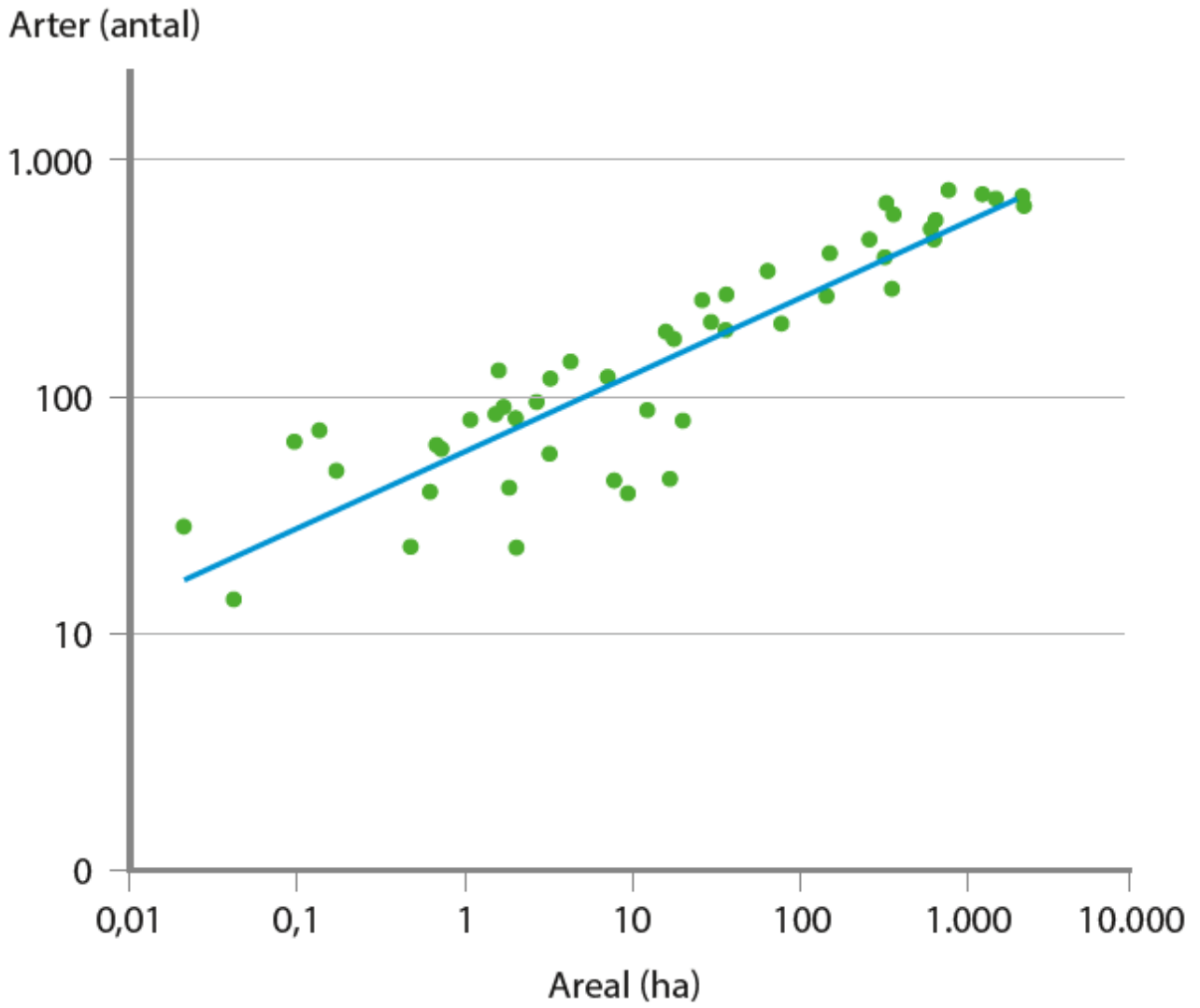


Fig. 11.5

LIV-Grundbog til biologi • © L&R Uddannelse 2018 • Illustration: Jørgen Strunge (Efter Christiansen, 2013)  
ISBN 978-87-7066-707-4

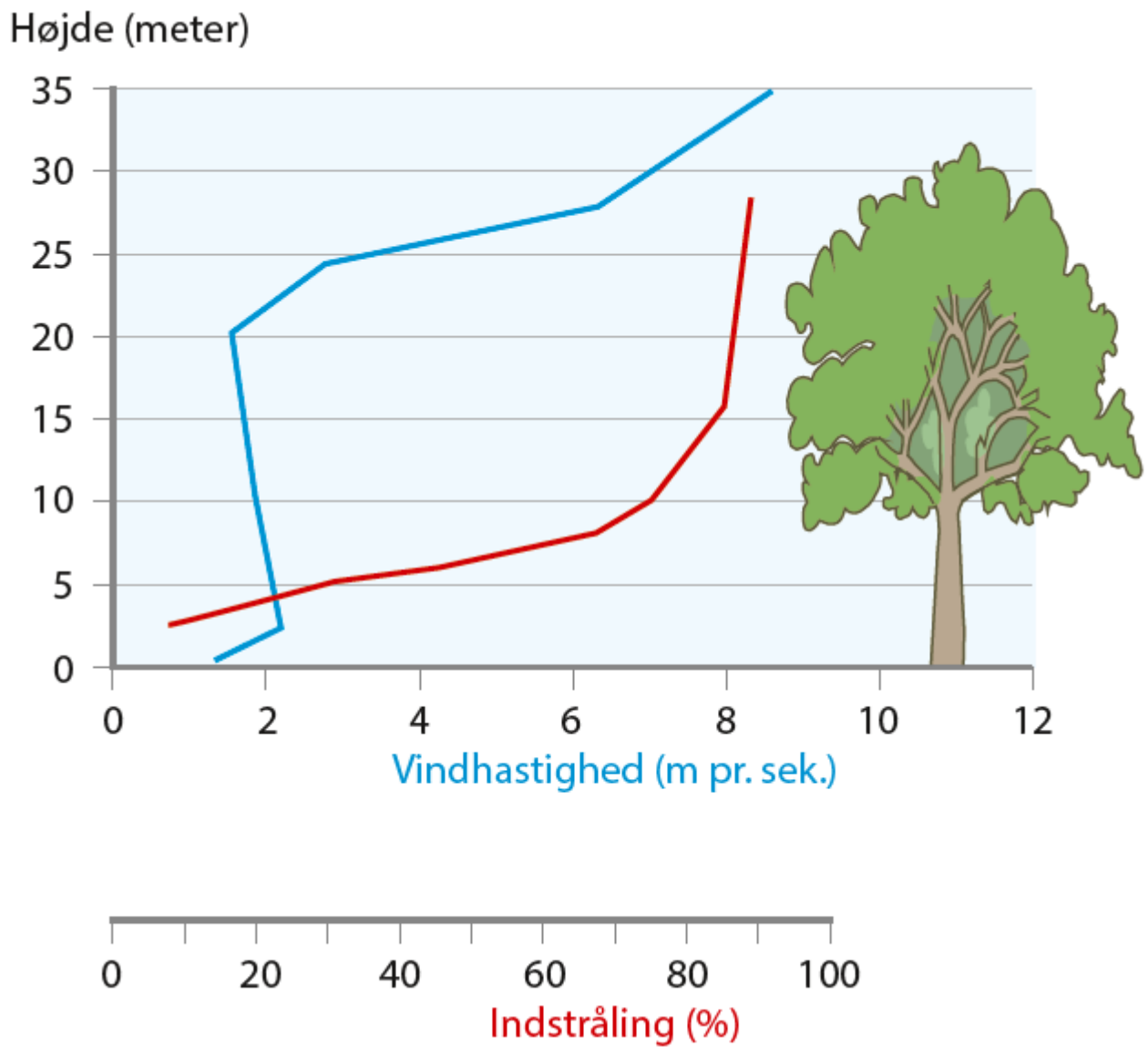


Fig. 11.6

LIV-Grundbog til biologi • © L&R Uddannelse 2018 • Illustration: Jørgen Strunge  
ISBN 978-87-7066-707-4

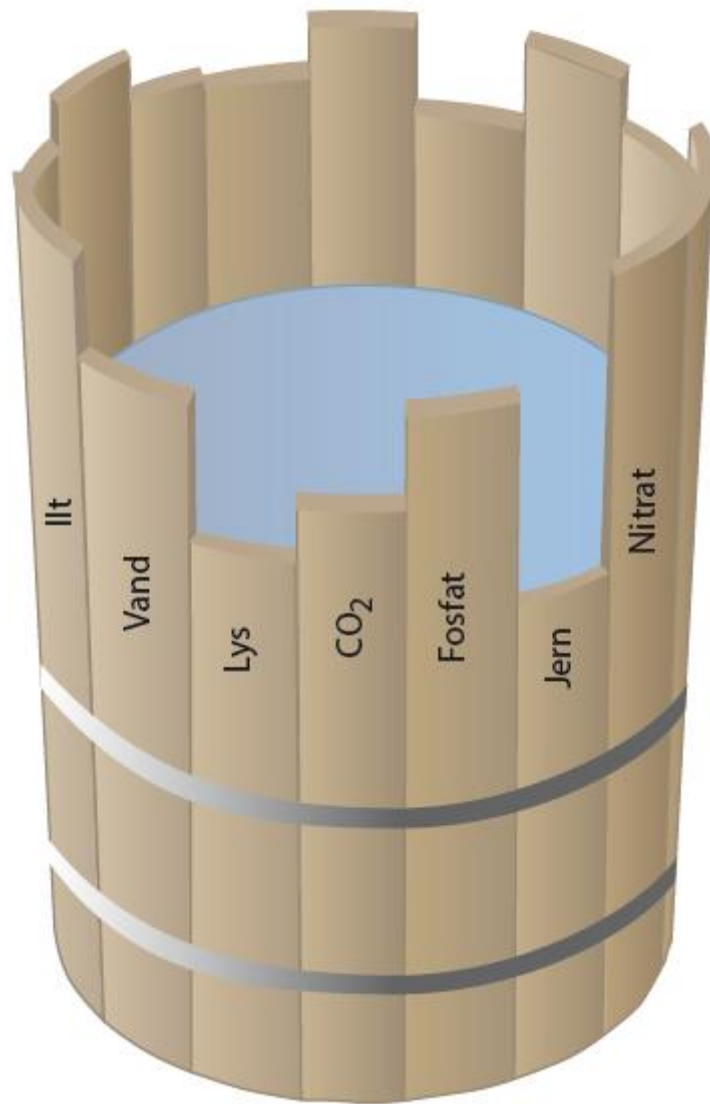


Fig. 11.7

LIV-Grundbog til biologi • © L&R Uddannelse 2018 • Illustration: Jørgen Strunge  
ISBN 978-87-7066-707-4

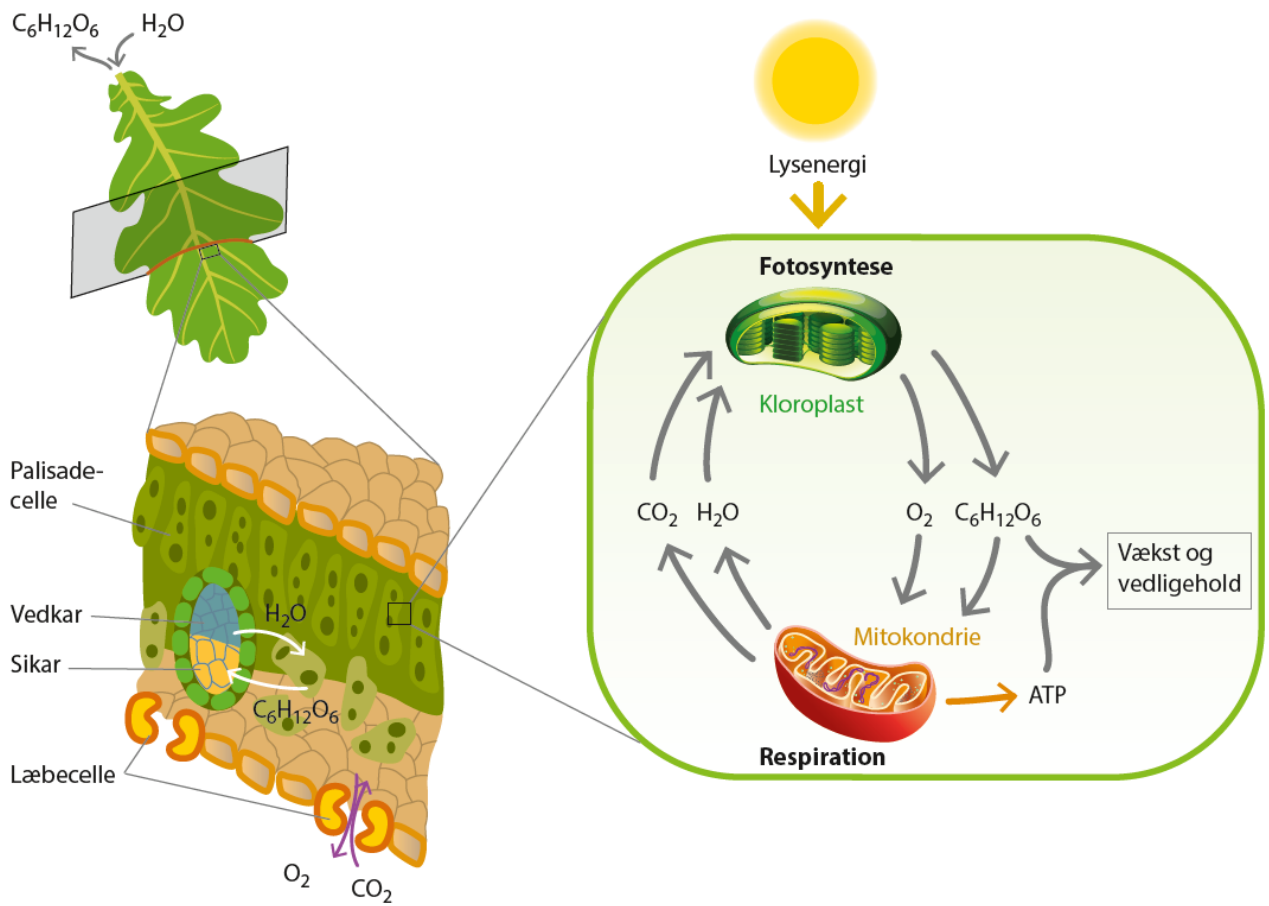


Fig. 11.8

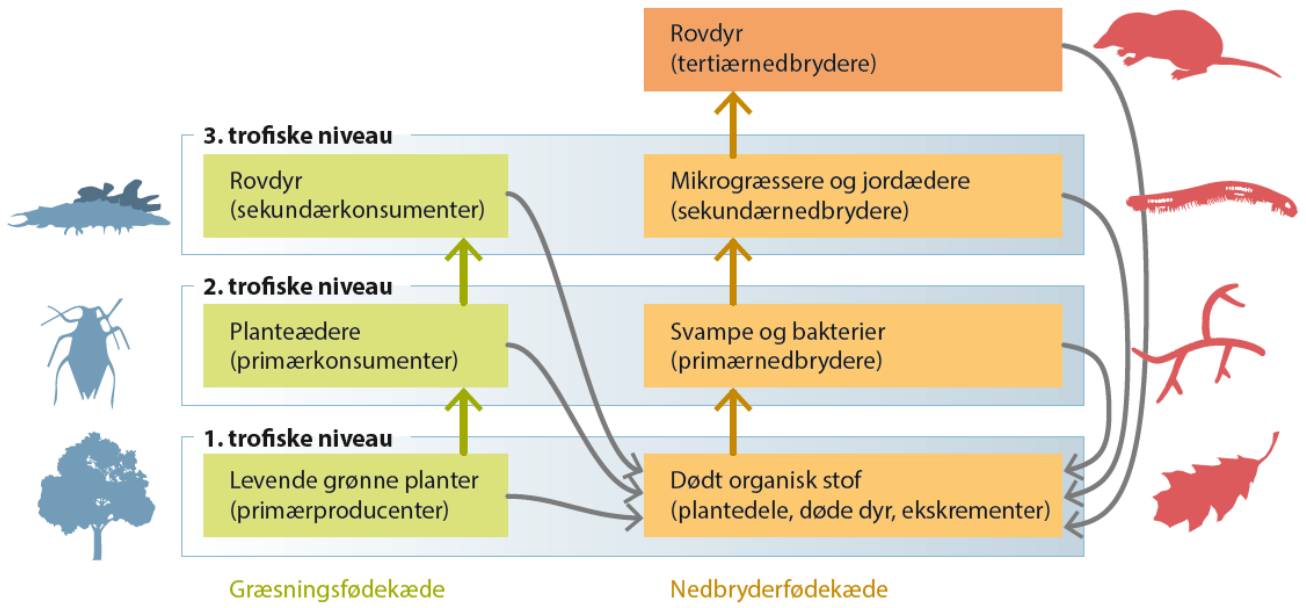


Fig. 11.11

LIV-Grundbog til biologi • © L&R Uddannelse 2018 • Illustration: Jørgen Strunge  
ISBN 978-87-7066-707-4





Forenklet fødenet i egeskov

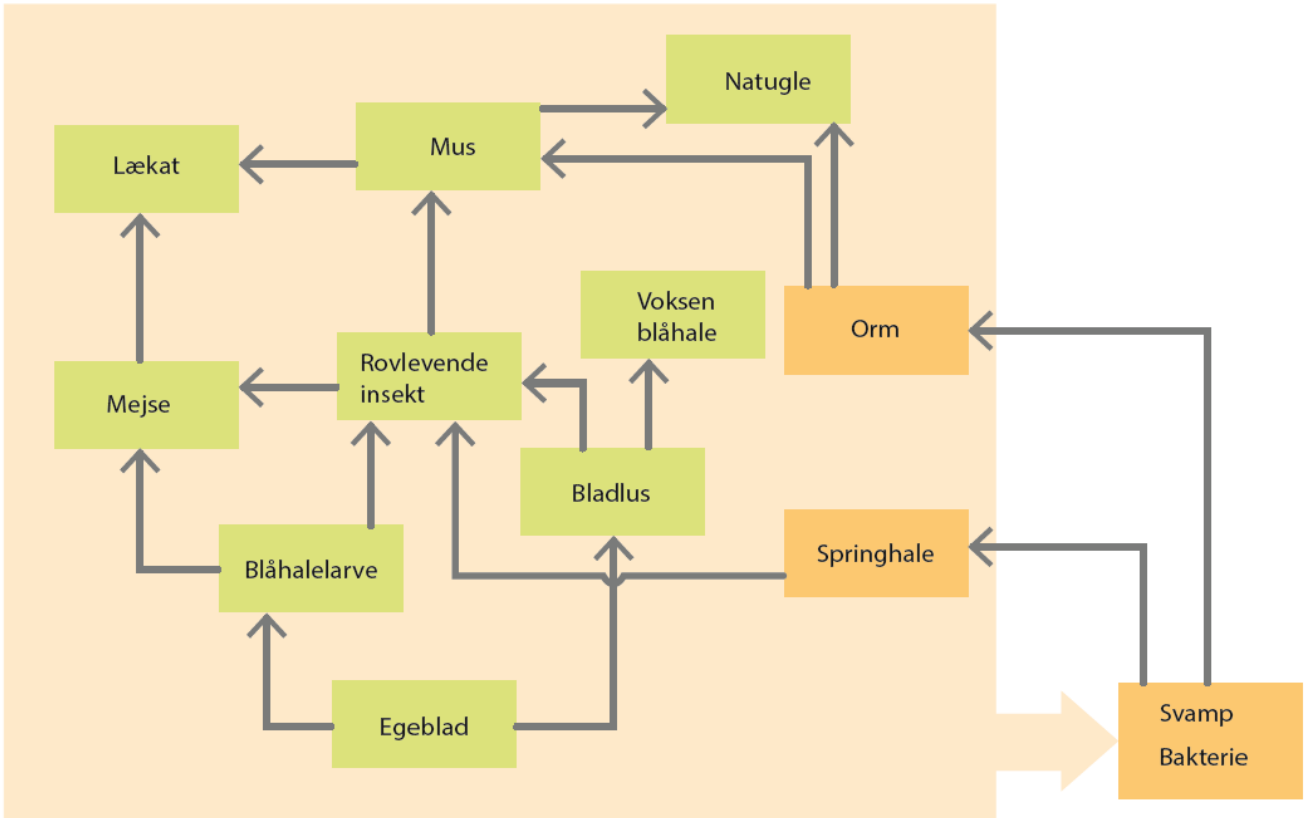


Fig. 11.12

LIV-Grundbog til biologi • © L&R Uddannelse 2018 • Illustration: Jørgen Strunge  
ISBN 978-87-7066-707-4

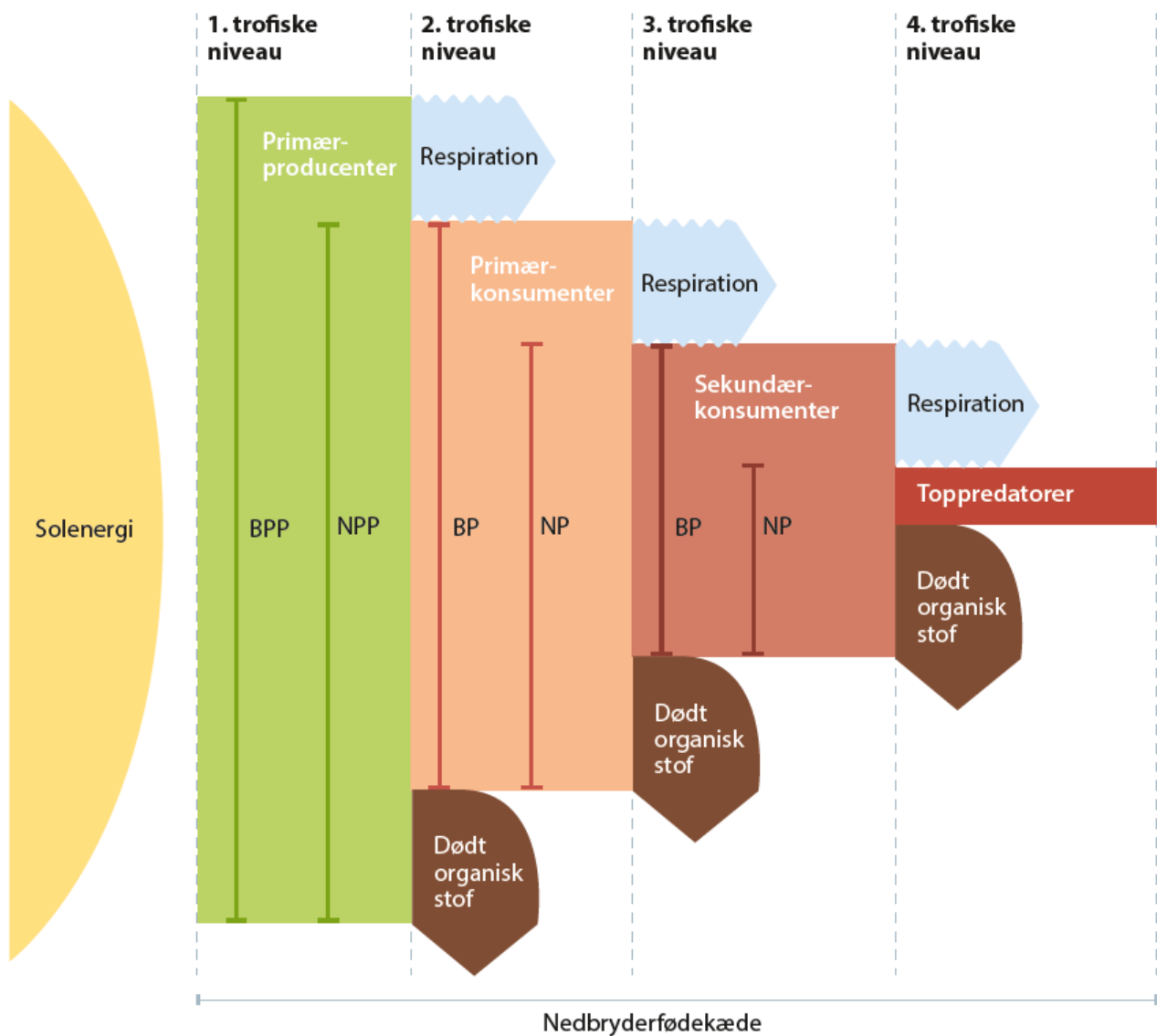


Fig. 11.13

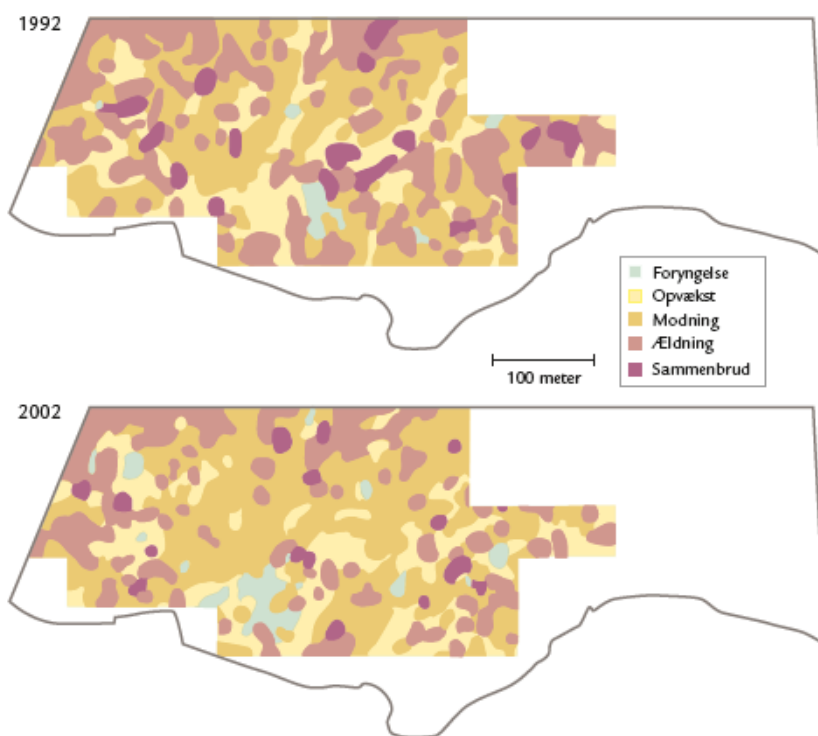
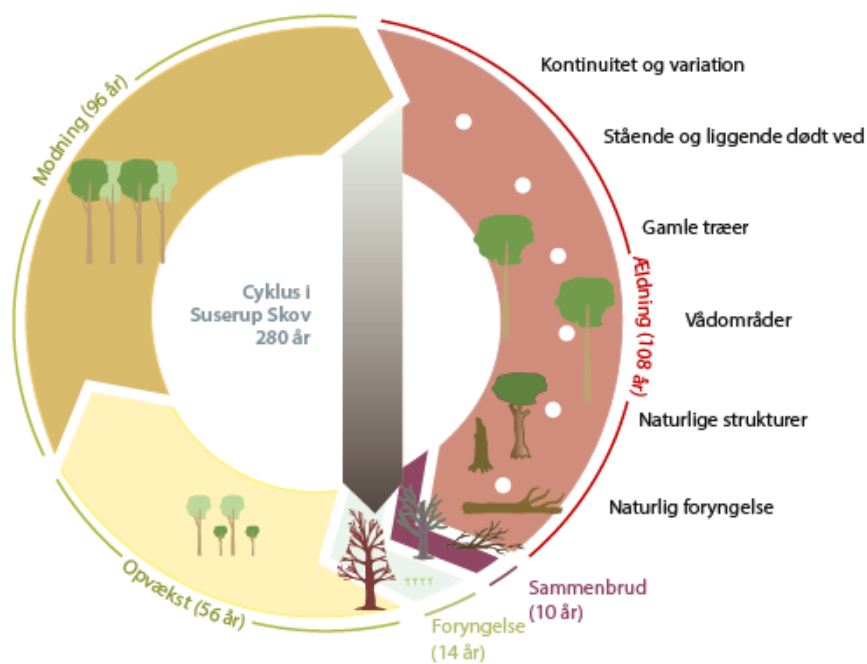


Fig. 11.17

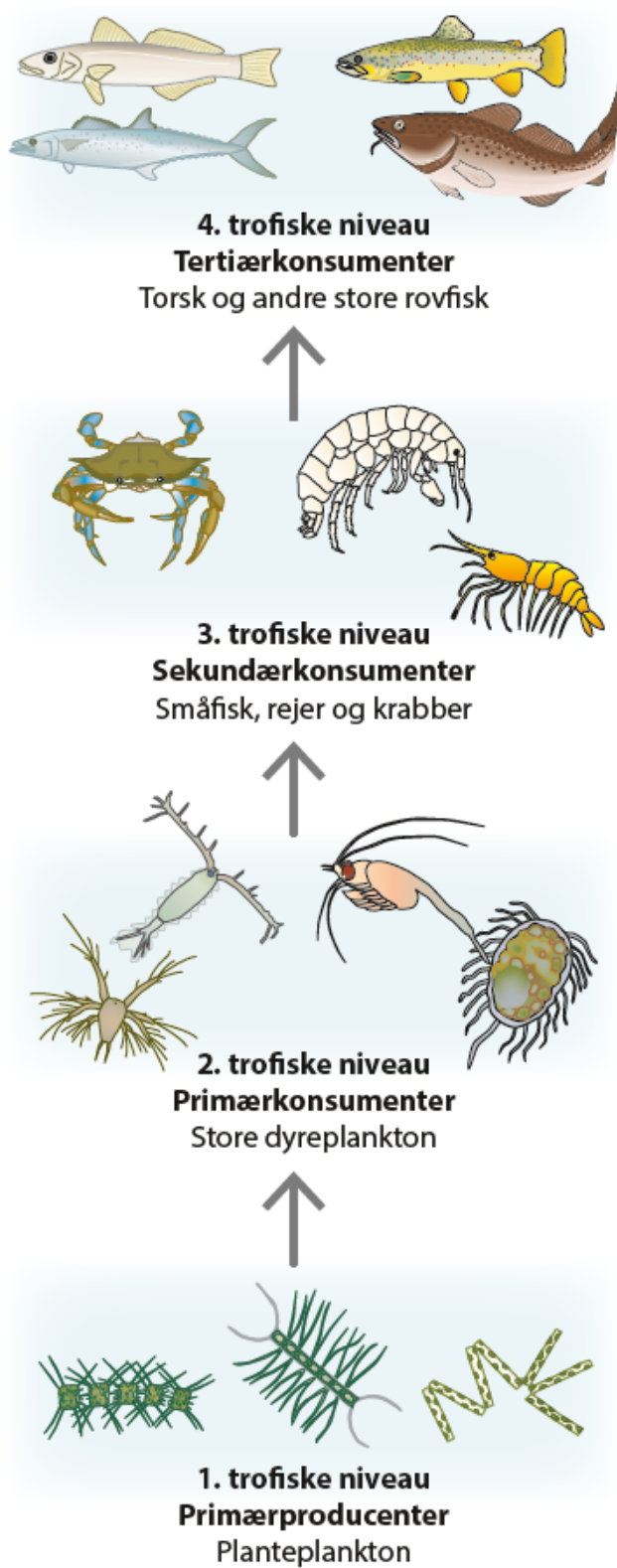


Fig. 11.20

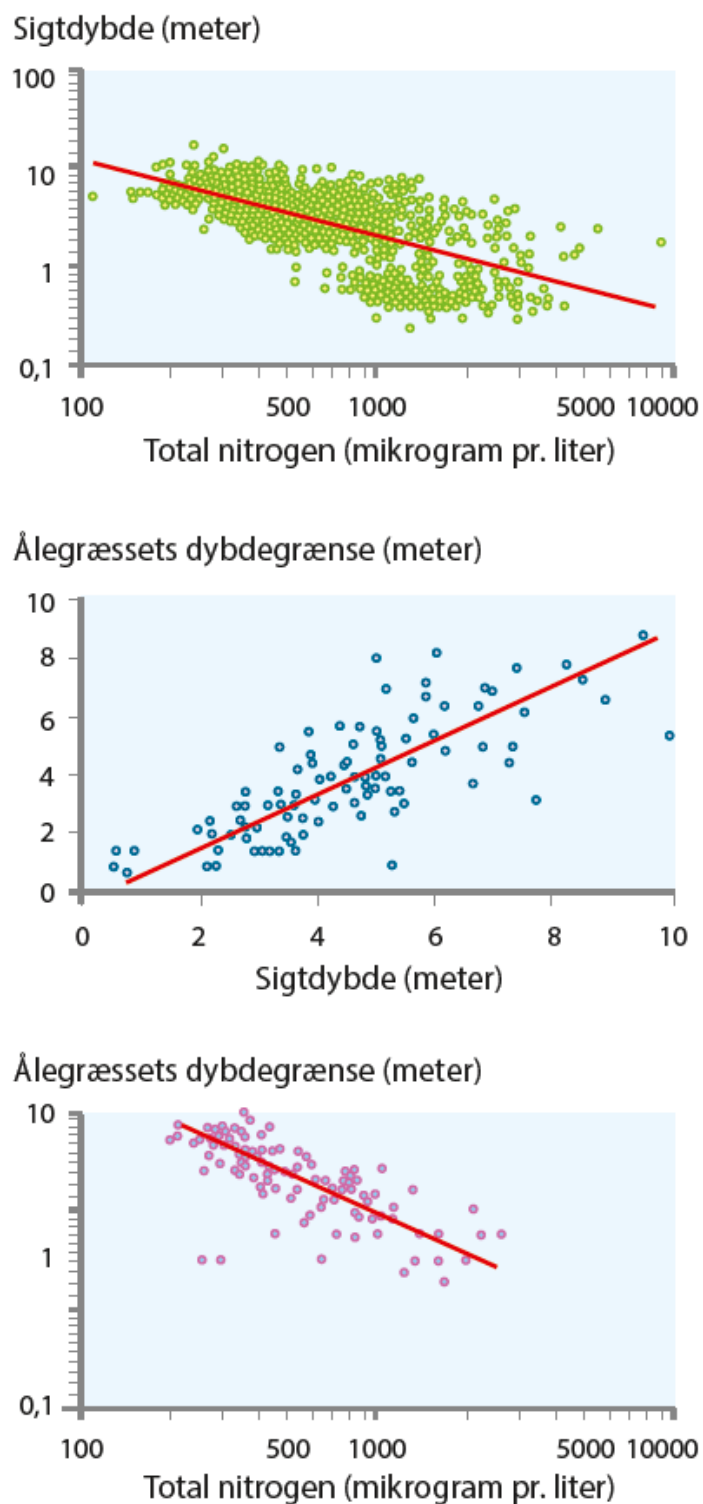


Fig. 11.26