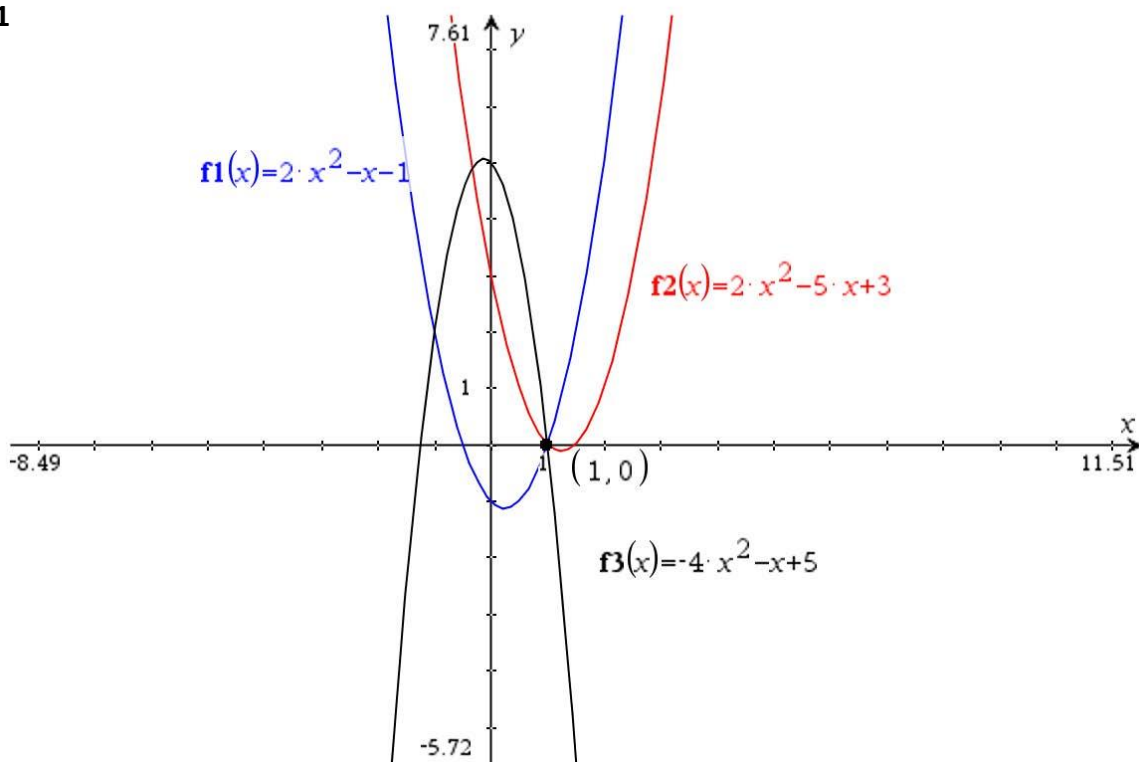


Facit til Kerne stof Mat 1 – side 242

Opgave 1211

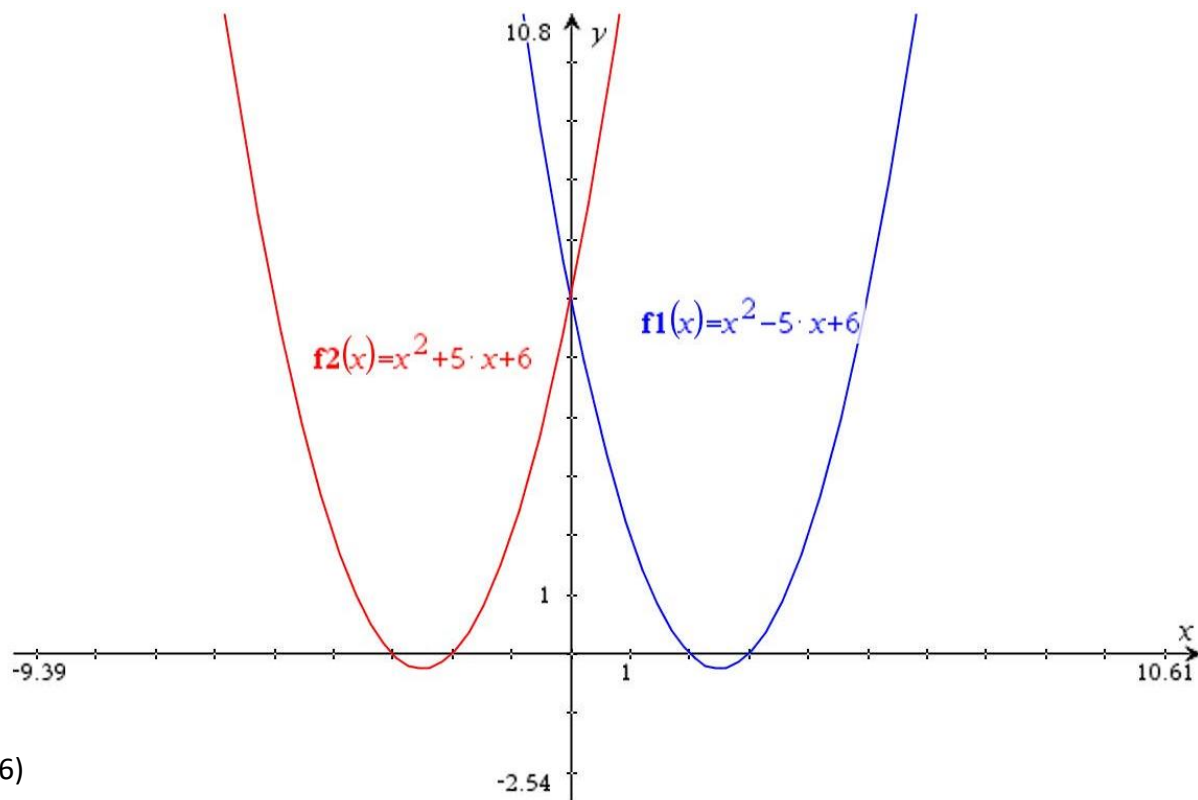
a)



b) (1,0)

Opgave 1212

a)



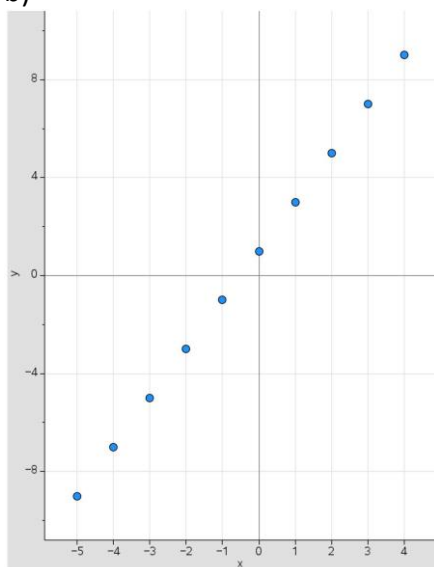
b) (0,6)

Opgave 1213

a)

Begyndelses x	-5	-4	-3	-2	-1	0	1	2	3	4
Tilvækst i y	-9	-7	-5	-3	-1	1	3	5	7	9

b)



	A x	B y	C	D
1	-5	-9		
2	-4	-7		
3	-3	-5		
4	-2	-3		
5	-1	-1		
6	0	1		
7	1	3		
8	2	5		
9	3	7		
10	4	9		

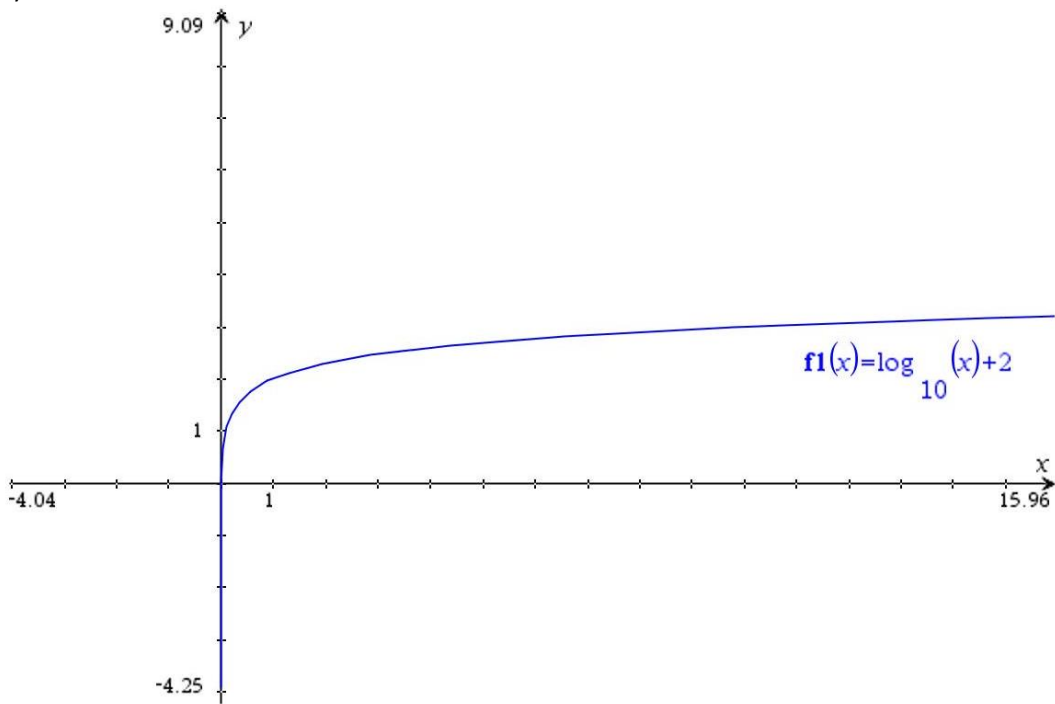
c) En lineær funktion

Opgave 1214

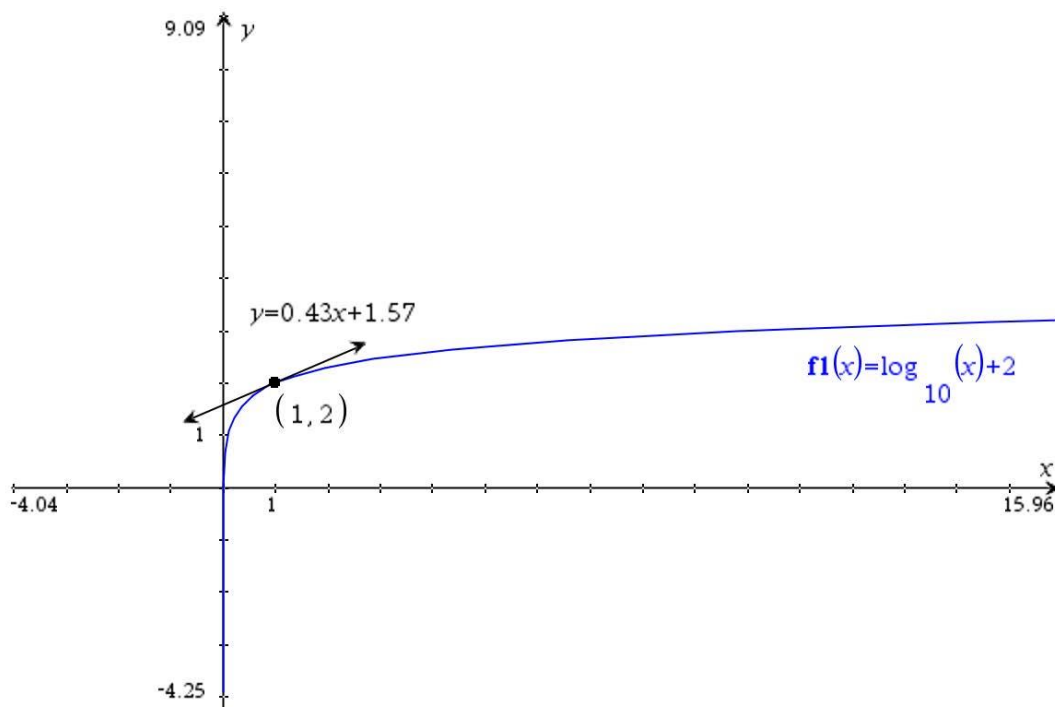
- a) 4
- b) 8
- c) -5
- d) 1

Opgave 1215

a)



b)



c) 0,43

Opgave 1216

- a) $f(x) = x$ går gennem $(0,0)$, ingen af graferne går gennem $(0,1)$ men alle logaritmefunktionerne går gennem $(1,0)$
- b) $\log_{10}(5)$, $\ln(5)$, $\log_2(5)$ $f(5)$
- c) $f(x)$
- d) $\log_2(x)$
- e) $\ln(x)$