

Facit til Kernestof Mat 1 – side 220

Opgave 1101

- a) $Dm(f) = [-2;6]$
- b) $Vm(f) = [0;6]$

Opgave 1102

- a) $Dm(f) = [-2;8]$
- b) $Vm(f) = [-2;6]$

Opgave 1103

- a) $Dm(f) = [-2;4]$
- b) $Vm(f) = [-2;4]$

Opgave 1004

- a) $Dm(f) = [-1;3]$
- b) $Vm(f) = [-1;2]$

Opgave 1105

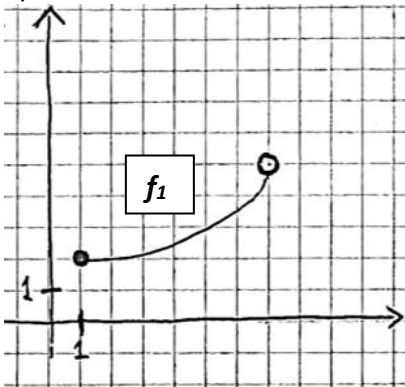
- a) $Dm(f) = [-4;10]$
- b) $Vm(f) = [-4;6]$

Opgave 1106

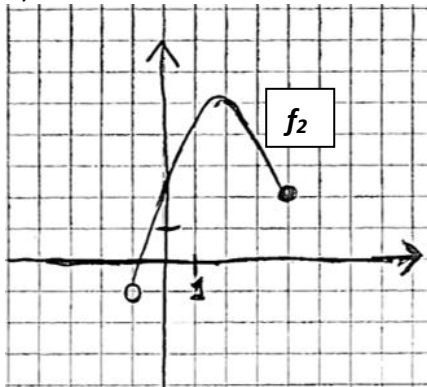
- a) $Dm(f) = [-2;8]$
- b) $Vm(f) = [-2;6]$

Opgave 1107

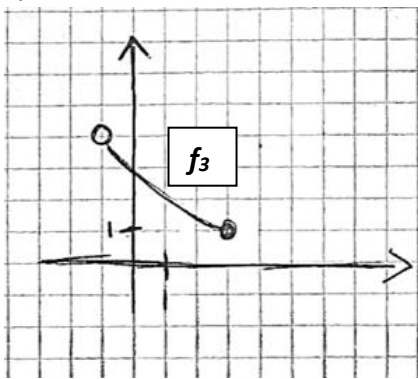
a)



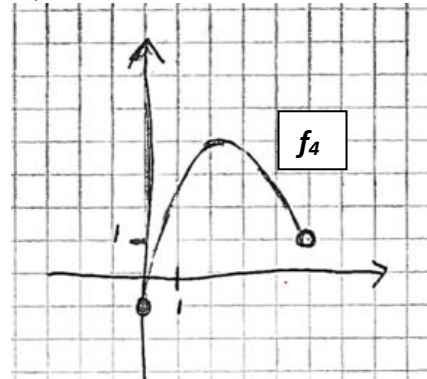
b)



c)



d)



Opgave 1108

- a) 0
- b) 1
- c) 1
- d) 0